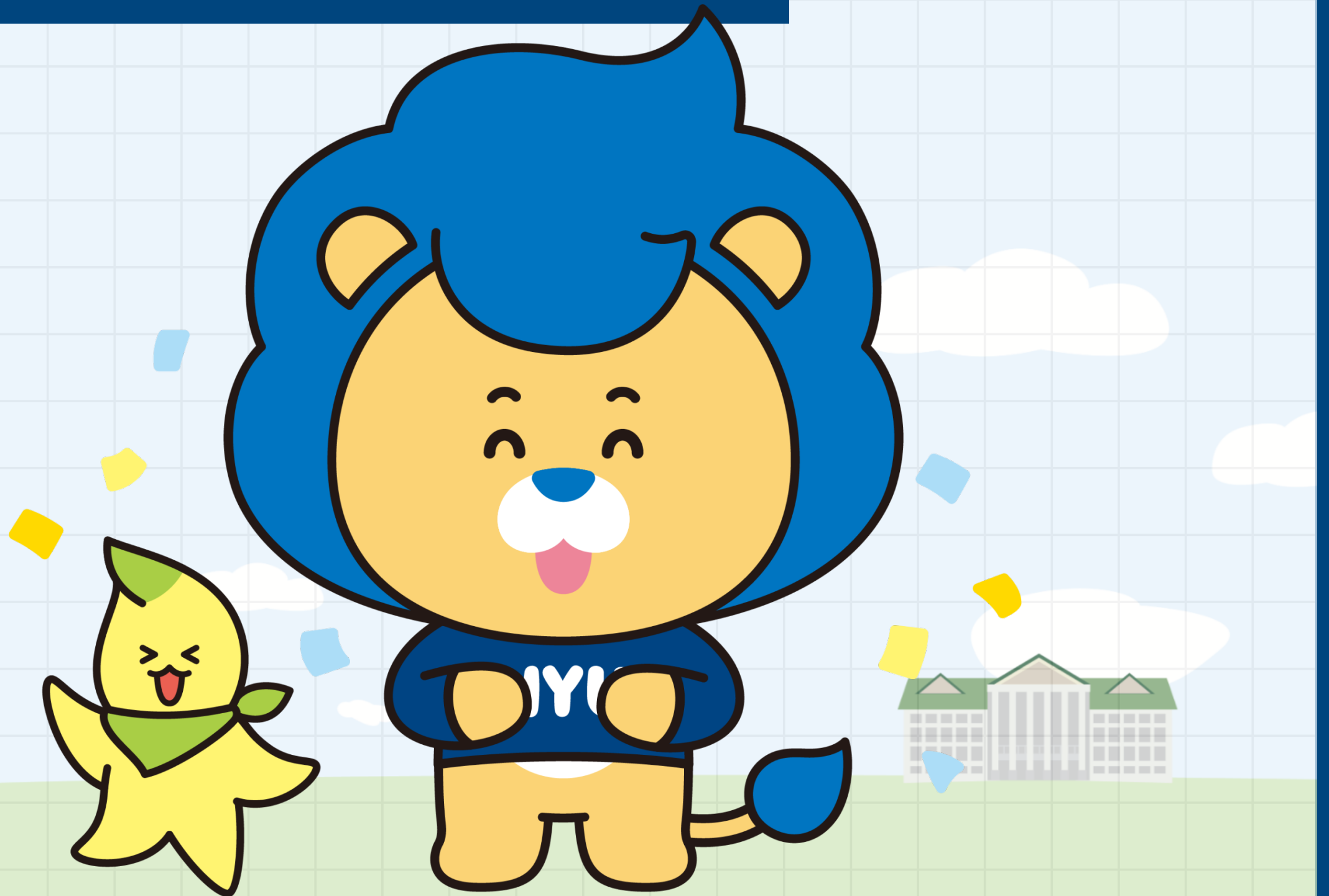


LMS Card news for professors

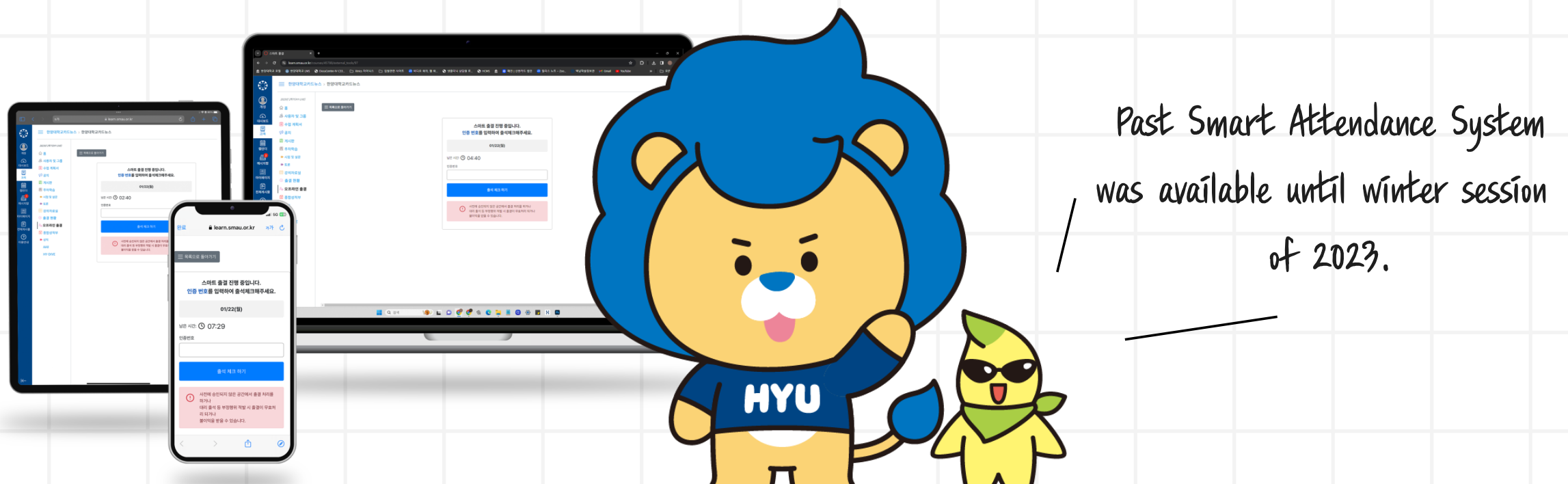
# HY—ON LMS Guide



**Changes of HY-ON in the first semester of 2024.**

# **Intergration of Offline Attendance input system**

**Offline Attendance input is going to be available on HY-ON LMS starting from first semester of 2024.**



**[클릭] HY-ON LMS 오프라인 출결 입력 가이드 매뉴얼 (국문)**

**[Click] HY-ON LMS Offline Attendance Guide Manual (ENG)**

Hanyang University

# Education on using HY-ON LMS

**Before the education, please check the guide videos and manuals for changes in the first semester of 2024 first.**



HY-ON LMS 활용교육 영상 (국문)

HY-ON LMS 활용교육 매뉴얼 (국문)

HY-ON LMS Guide Video (Eng sub)

HY-ON LMS Guide Book (Eng ver.)

*Office of Academic Innovation Educational Technology & Innovation Team*

## 🔊 Newly added functions

**First !** (please refer to 32p of manual)

Past [Lecture Contents] changes to [Weekly Learning].

It is available to upload contents for each week(Live Lecture, Online Video Lecture, Assignments, Quizzes, Discussions, video materials and learning materials

**Second !** (please refer to 25-26 page of manual)

Past [Q&A Board] changes to [Board].

It is available to make and use various types of boards(Q&A board, 1:1 Private Board, Anonymous Board) and check student's View, Read, Write and Comment through [Board Statistics].

## Notification for changes in the first semester of 2024.

### Some changes and additions of LMS menu

Some menus have been changed.  
Please check the manual for more information!



# Notification for changes in the first semester of 2024.

## Some changes and additions of LMS menu



## Information about changes and additions of menu

### Third !

Past [Learn Status] menu changes to [Lecture/Attendance].

### Fourth ! (please refer to 27-30p of manual)

[Students Notifications] menu has been newly opened. it is possible to send Inbox, SMS and E-mail.

\* SMS will be sent by each order based on the individual student's setting. (first) Hey-Young APP Push (second) Kakao Talk Message (third) SMS.



## ▶ Newly added functions

### First !

It is possible to add annotation at 'SpeedGrader' when you grade 'Assignment' which is submitted in PDF form.



\* Please check the education video for more information!

### Second !

It is necessary to select a week and lesson for Attendance when you use Live Lecture(ZOOM) and Video Lecture(VOD).

Attendance Settings

☒ Use Attendance

Attendance Rate 70 % **POINT**

☐ Use tardiness criteria

Tardiness recognition rate  %

Participation allowed time compared to the total meeting time

Select a week and lesson for attendance.

Week 1 Lesson 1 **POINT**

## Notification for changes in the first semester of 2024.

### Some function additions of LMS

Some of the functions that professors requested have been added.




# Notification about creating a new ZOOM account for professors

check!

## If you need a new account

- [HY-IN Portal] → [Edit Personal Info.]  
→ Change your [E-mail address to HY  
G Suite] and save
- Write a Hanyang University [Apply for  
교강사's ZOOM account] google form
- activate the invitation mail sent from  
Academic Innovation/Educational  
Technology & Innovation Team.

 [Click] move to [Apply for 교강사's  
ZOOM account] google form

## If you already have Hanyang University ZOOM account

- Professors who already have  
Hanyang University ZOOM account  
can use it as it is.  
(There's no need to create a new  
account ❌)



# With HY-ON

It is possible to directly access My Classroom through HY-ON homepage.

★ It will be helpful to visit HY-ON homepage since **notices** about HY-ON, **additional manual** and **FAQ** are uploaded on the homepage. ★



[Click] Move to HY-ON Homepage!

